



Stamp Seeds



# ABOUT US

Seed farm and retail, 42 years growing & retailing seed with seed sales across North America

- 13,000 ac pedigreed seed a year
- Select, Foundation, Registered, & Certified

Matthew Stamp - Seed Cleaning, Construction Projects Manager, Office Oversight

Nathan Stamp - Farm Manager

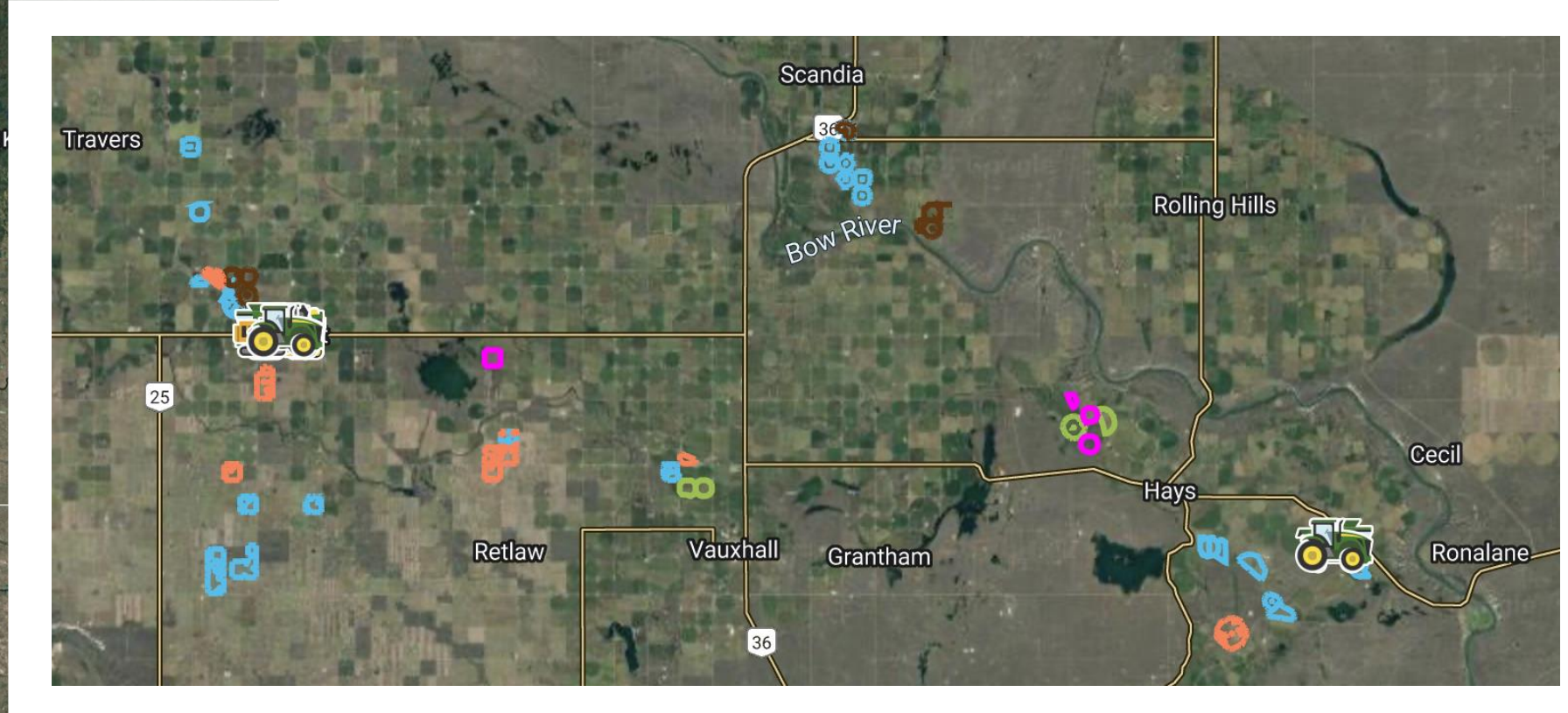
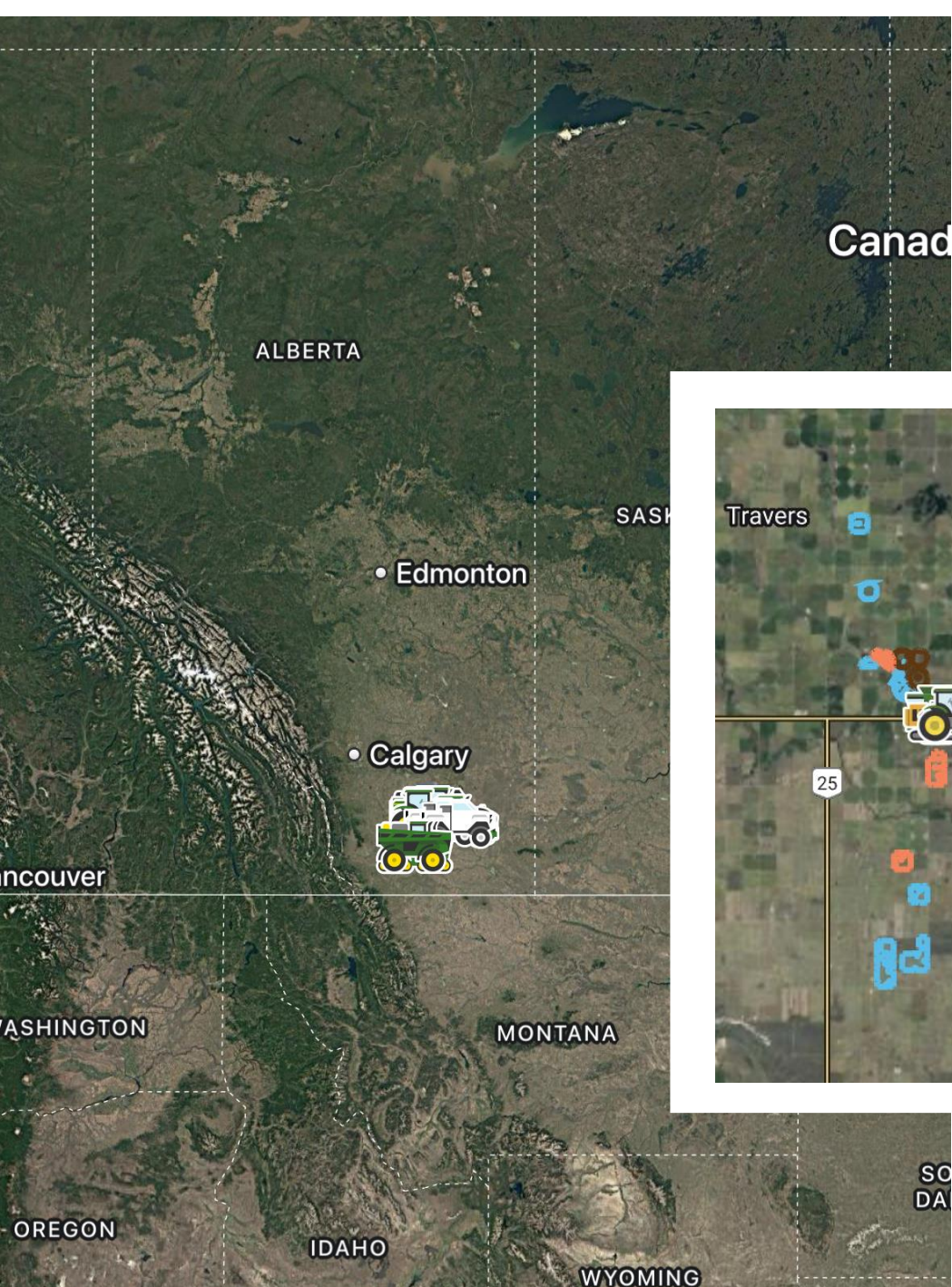
Greg Stamp - Seed Sales Manager

Richard Stamp - CEO, Stamp Seeds & Farms Special Projects

Melissa Dueck - CFO

20 full time staff + seasonal





# Irrigation, Dryland, Feedlots



# Crops Sold

CWRS

DURUM

SOFT  
WHITE SPRING

GP WHITE

GP RED

HARD  
WHITE

MALT  
BARLEY

FEED  
BARLEY

OAT

SPRING  
TRITICALE

HYBRID  
FALL  
RYE

CONVENTIONAL  
FALL RYE

FALL  
TRITICALE

WINTER  
WHEAT

CORN

YELLOW  
PEA

GREEN PEA

FORAGE  
PEA

MAPLE PEA

FABA  
BEAN

LENTIL

CHICKPEA

INOCULANTS

CANOLA

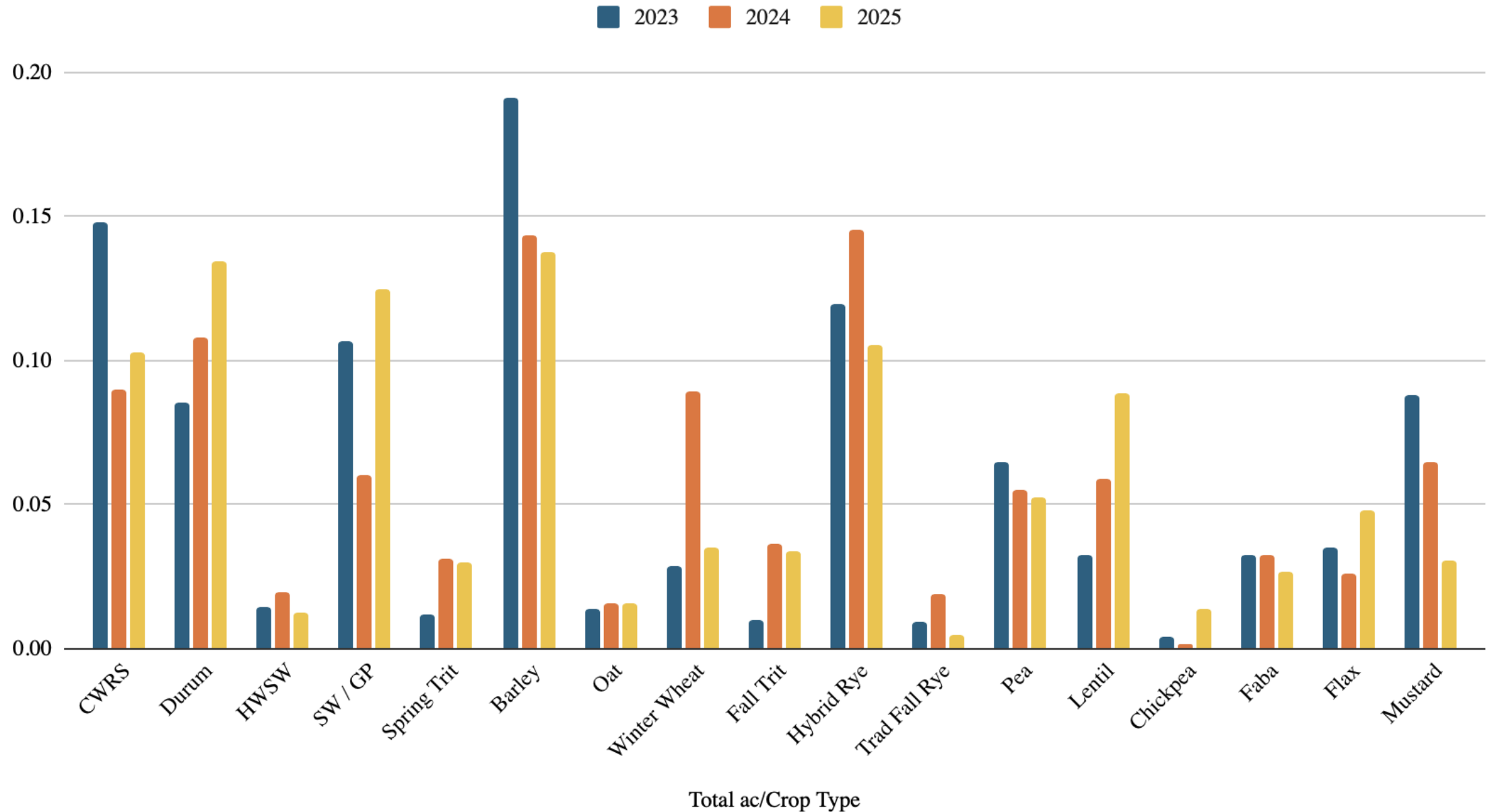
FLAX

MUSTARD

GRAZING /  
GREENFEED  
BLENDS

ALFALFA &  
GRASSES

# Seed Stats





## Chickpea Event

Thursday Feb 26th, 2026

Location: Meeting Suite A @ Ag Expo

9:00 Coffee, 9:15 Start

**Chickpea Agronomy  
& Contracting Opportunities**

Ken McDougall - McDougall Acres Grainex  
Sarah O'Doherty - McDougall Acres Grainex



## Fall Varieties Sneak Peek

### Hybrid Fall Rye:

KWS Serafino - Grain / Forage w Low Ergot Risk  
KWS Receptor - Grain, Short, w Low Ergot Risk  
KWS Attainer - **New!**  
SU Cossani - Grain Type, Tolerates Drought  
SU Performer - Grain / Forage w Good Hardiness

**Fall Rye:** AC Hazlet - Traditional Fall Rye

### Fall Triticale:

Tadeus - Short Strong Straw, High Yields  
TriCal Arctic - Tall, Awnless, **New!**

### Winter Wheat:

AAC Coldfront - CWRW - Great Yield & Disease PKG  
AAC Icefield - Hard White WW - Showy Heads

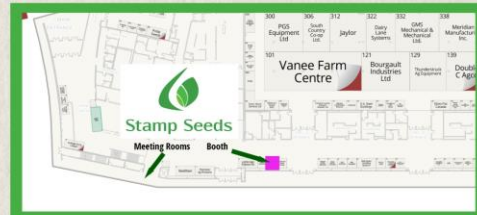
## Seed Treat Event

Friday Feb 27th, 2026

Location: Meeting Suite A @ Ag Expo

9:00 Coffee, 9:15 Start

**Seed Treating Pro Training**  
Katharyn Houston - Syngenta



Enchant, AB

[www.stampseeds.com](http://www.stampseeds.com)

Sales: Blair Balog

Office: 403.739.2233 Cell 403.634.4349

[blair@stampseeds.com](mailto:blair@stampseeds.com)

### CWRS Wheat:

SY Manness - Early, performs like a CPS  
AAC Westking - Stands, high falling numbers - **NEW!**  
AAC Stoughton VB - high falling numbers - **NEW!**  
CDC Oakman VB - Solid stem for sawfly -- **NEW!**

### Durum Wheat:

AAC Schrader - I for FHB, hollow stem  
AAC Brigham VB - Top yields, hollow stem - **NEW!**  
AAC Stronghold - Solid stem, straw strength  
AAC Grainland - Solid stem, dryland fit

### SWSW & GP & GP Red

AAC Galore VB (SWSW) - I for FHB - **NEW!**  
AAC Awesome VB (SWGPs) - Intermediate for FHB  
Alotta (GP Red) - Early, bu weight, stands, - **NEW!**

### Hard White Wheat:

AAC Whitehead VB - Milling market

### Malt Barley:

SY Stanza - 2 row European type & feed (non GN) - **NEW!**  
Bill Coors 100 - 2 row, stands, contracts  
AB Dram - 2 row, Non GN  
AAC Synergy - 2 row - maintains bu weight

### Feed Barley

Esma - 2 row European type  
CDC Durango - 2 row, replace Austenson - **NEW!**  
AB Fortify - 6 row smooth awn, feed & forage - **NEW!**  
CDC Renegade - 2 row smooth awn, forage flex - **NEW!**

### Oat:

CDC Byer - Milling, & BYDV resistant! - **NEW!**  
CDC Haymaker - Forage

### Spring Triticale:

TriCal Surge - Awnless, mid season, true forage  
AB Sunbeam - Grain, awned, low disease risk - **NEW!**

### Grazing / Greenfeed Blends - **NEW!**

Spring Cereal - Bar, oat, spring trit (awnless) - **NEW!**  
Spring Cereal & Pea - Bar, oat, trit, forage pea - **NEW!**  
Cereal Continuator - Bar, oat, spring & fall trit (awnless) - **NEW!**  
Everything - 12 varieties, inc fall crops - **NEW!**

**Forages** - Alfalfa, grass, sorghum, cover crops, poly crops

**Hybrid / Trad Fall Rye, Fall Trit, Winter Wheat Available**

### Corn: Thunder Seed - Grain, Silage, Grazing

TH4072RR / TH 6072VT2P - 72 day 2025 CHU  
TH4477 GT - 77 day 2200 CHU - Adaptable - **NEW!**  
TH4678RR - 78 day 2225 CHU - Silage beast **NEW!**  
TH 6678 VT2P - 78 day 2225 CHU - Silage beast **NEW!**  
TH6278 VT2P - 78 day 2225 CHU - Adaptable  
TH6182 VT2P - 82 day 2400 CHU - Silage

### Yellow Pea:

AAC Julius - Medium season, small, VG coat  
CDC Meadow - Small, industry standard

**Green Pea:** CDC Huskie - Green retention, yield adv - **NEW!**

**Forage Pea:** Purple Flower - Common

**Maple Pea:** CDC Mosaic - stands / yields better vs some

### Faba Bean:

DL Nevado - 0 tannin, low vicine, small size  
Fabelle - Low vicine, tannin, medium size  
Hammer - Low vicine, tannin, medium size - **NEW!**  
219-16 - 0 tannin, smaller size

**Lentil:** CDC Proclaim CL - Small red, industry standard

CDC Lima CL - Large green

CDC Jimini CL - Small green

### Chickpea:

CDC Pasqua - Large, imazamox tol, contracts - **NEW!**  
CDC Pearl - Small, early, imazamox tol, contracts - **NEW!**

### Inoculants

**Canola:** Canterra - RR, TF, LL, CL

### Flax:

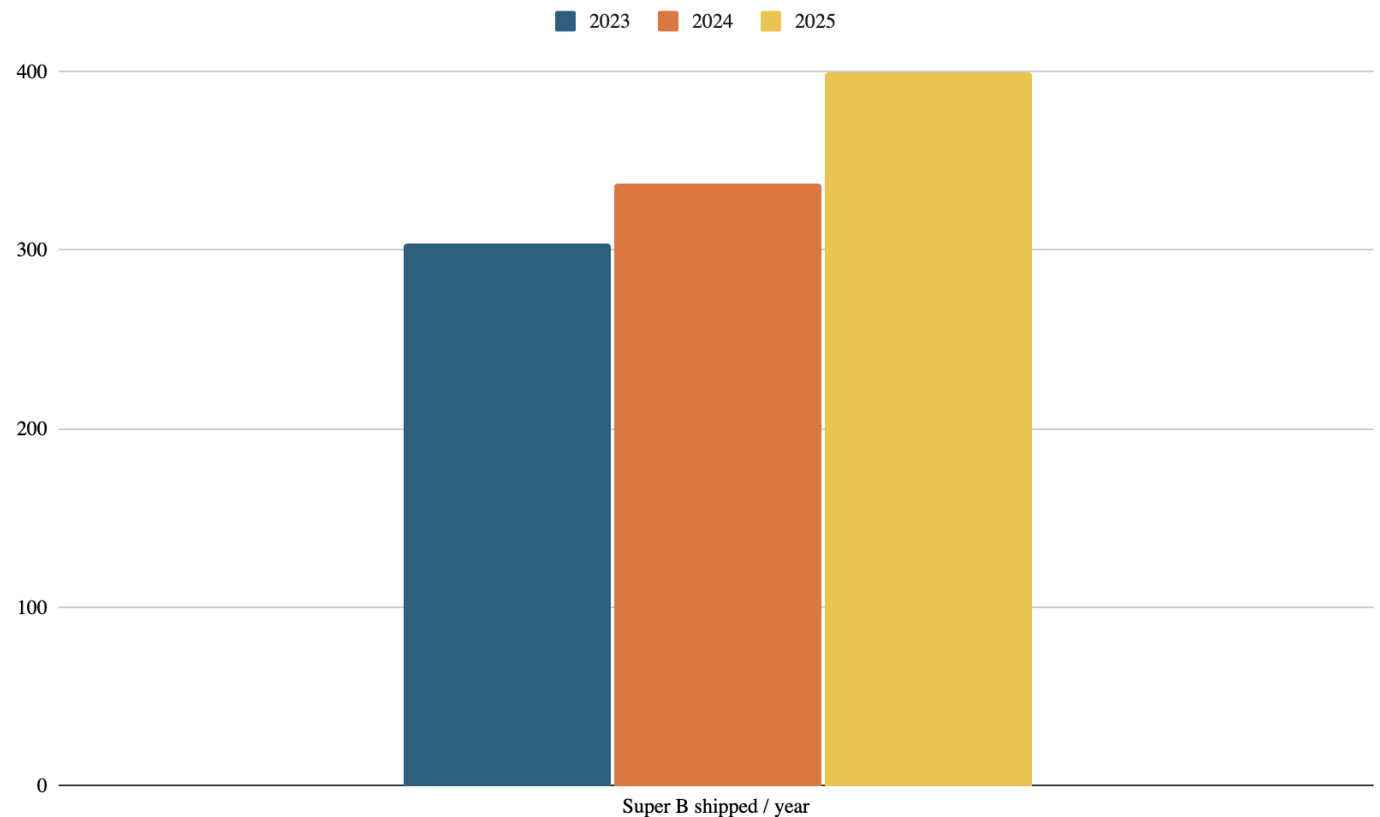
CDC Rowland - Brown - 4-5% yield advantage  
CDC Dorado - Yellow - early, stands, high ALA

### Mustard:

Cover Crop - AAC Guard - Biofumigant - **NEW!**  
Brown: AAC Brown Elite - hybrid, 20%+ yield - **NEW!**  
Brown: Centennial  
Yellow: AAC Yellow 80 - 5-10% yield adv  
Yellow: Andante  
Oriental: Cutlass, Vulcan, Forage

# Seed Stats

- 375,000 ac covered per year by customers (approximately )
- 1M+ bushels seed cleaned per year
- 100+ varieties sold
- 1800+ customer list
  - 400+ customers per year
  - 1500+ pickups per year

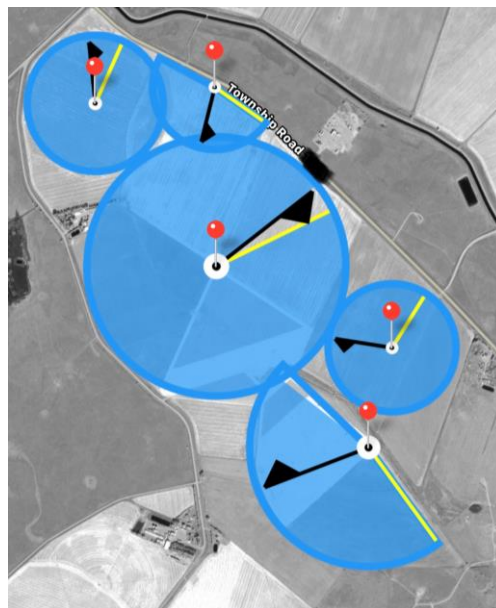
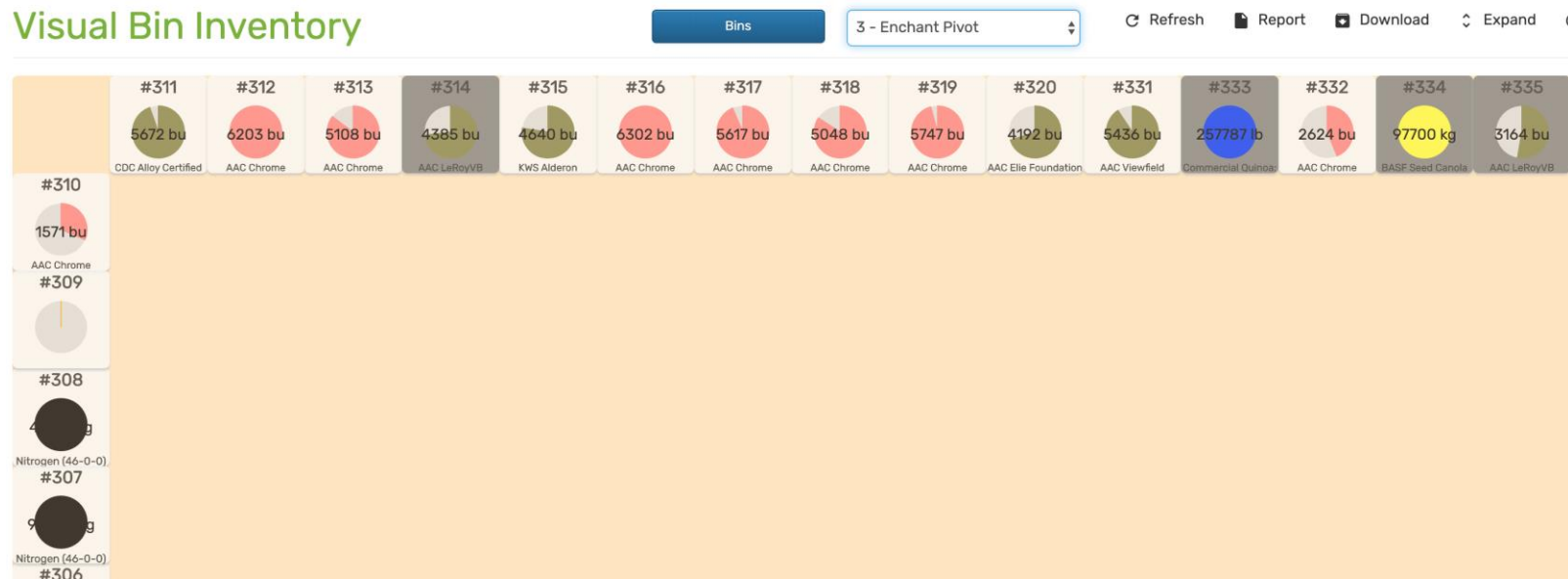


# Seed Cleaning

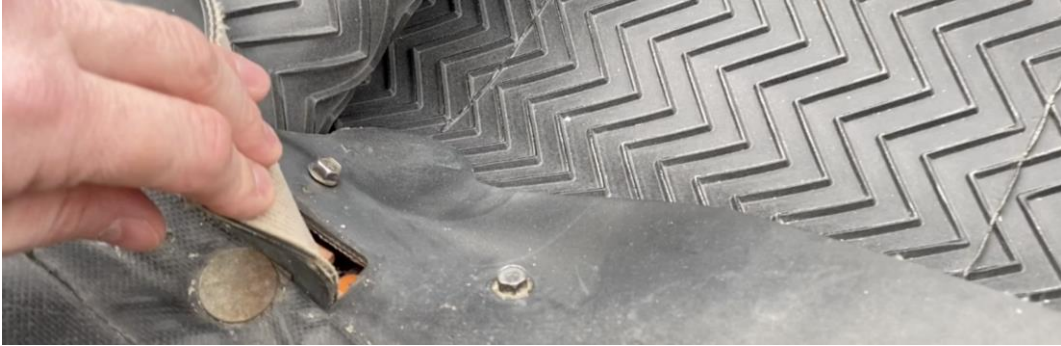


# Quality Control

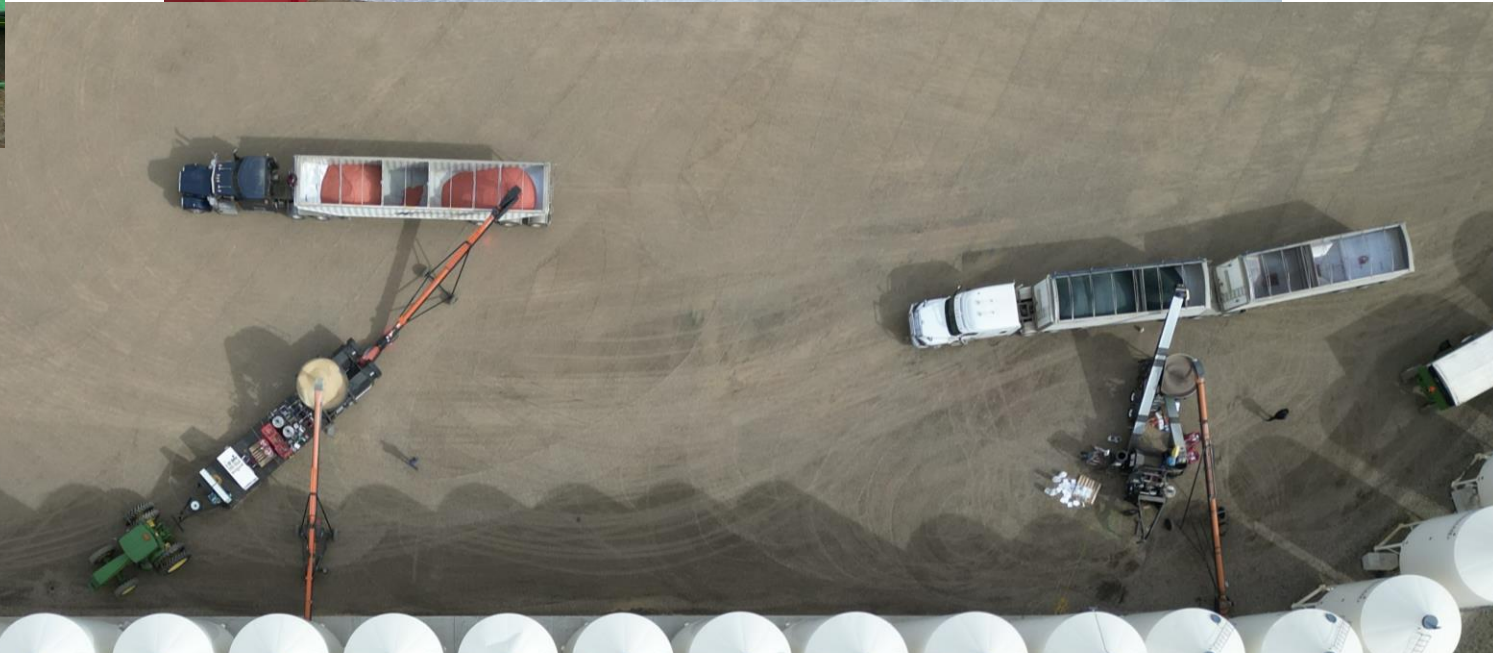
## Visual Bin Inventory



# Cleaning



# Service



# Marketing



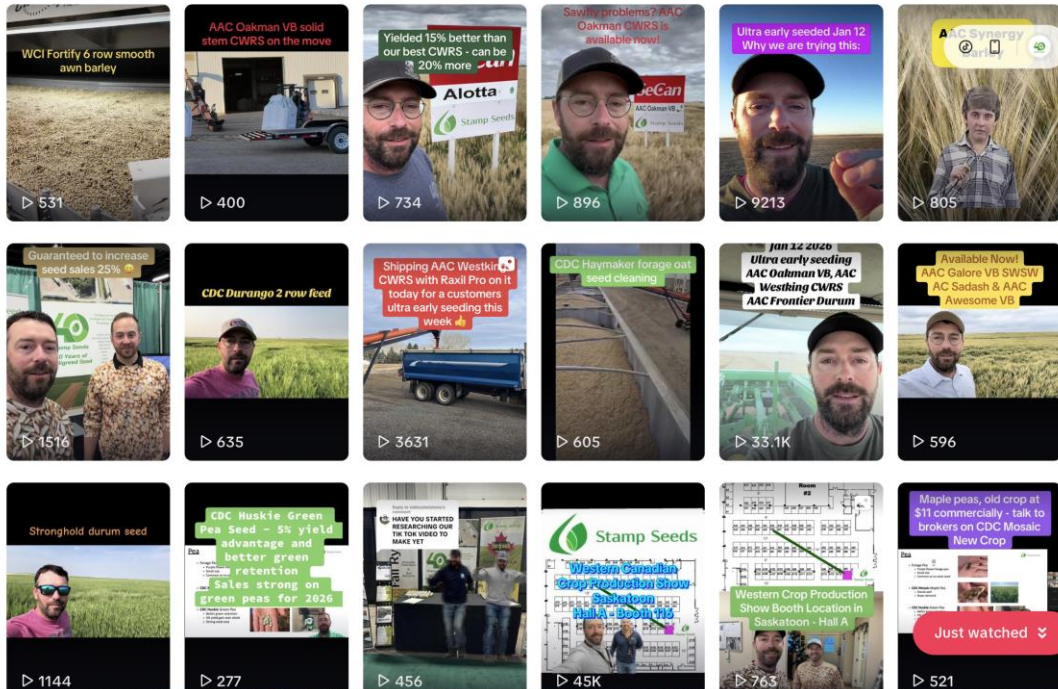
TikTok

Search

- For You
- Explore
- Following
- Friends
- LIVE
- Messages
- Activity
- Upload
- Profile
- More

Following accounts

- uravgo
- Gary Aksamit
- Joe maldenolls



WCI Fortify 6 row smooth awn barley 531

AAC Oakman VB solid stem CWRS on the move 400

Yielded 15% better than our best CWRS - can be 20% more Alotta 734

Saving problems? AAC Oakman CWRS is available now! 896

Ultra early seeded Jan 12. Why we are trying this: 9213

AAC Synergy 805

Guaranteed to increase seed sales 25% 1516

CDC Durango 2 row feed 635

Shipping AAC Westkit CWRS with Raxil Pro on it today for a customers ultra early seeding this week 3631

CDC Haymaker forage oat seed cleaning 605

Jan 12 2026 Ultra early seeding AAC Oakman VB, AAC Westing CWRS AAC Frontier Durum 33.1K

Available Now! AAC Galore VB SWSW AAC Sadash & AAC Awesome VB 596

Stronghold durum seed 1144

CDC Huskie Green Pea Seed - 5% yield advantage and better green retention Sales strong on green peas for 2026 277

HAVE YOU STARTED RESEARCHING OUR TIK TOK VIDEOS TO MAKE YET 456

Stamp Seeds Western Crop Production Show Substation Hall A - Booth 116 45K

Western Crop Production Show Booth Location in Saskatoon - Hall A 763

Maple peas, old crop at \$11 commercially - talk to brokers on CDC Mosaic New Crop 521

Just watched

# Demonstration Plots



# Variety Flow Example

## AAC Stronghold

- Solid stem for sawfly
- MS for FHB
- Stands great and yields with moisture
- Yield falls off under 40 bu avg

## AAC Schrader

- I rating for FHB
- Taller
- Hollow stem
- Irrigated success with 2 PGR's

## AAC Grainland

- Solid Stem, dark awns
- Popular on dryland
- Does well under low yield (sub 40 bu)

## AAC Brigham VB - **New for 2026**

- AAC Succeed VB replacement
- Yields improvement
- Good disease package

## **New Fall 2026**

## AAC Frontier

- First Ergot Resistant Durum
- I rating for FHB
- Hollow stem



# Seed Production Management



# Partners



# FOLLOW US

