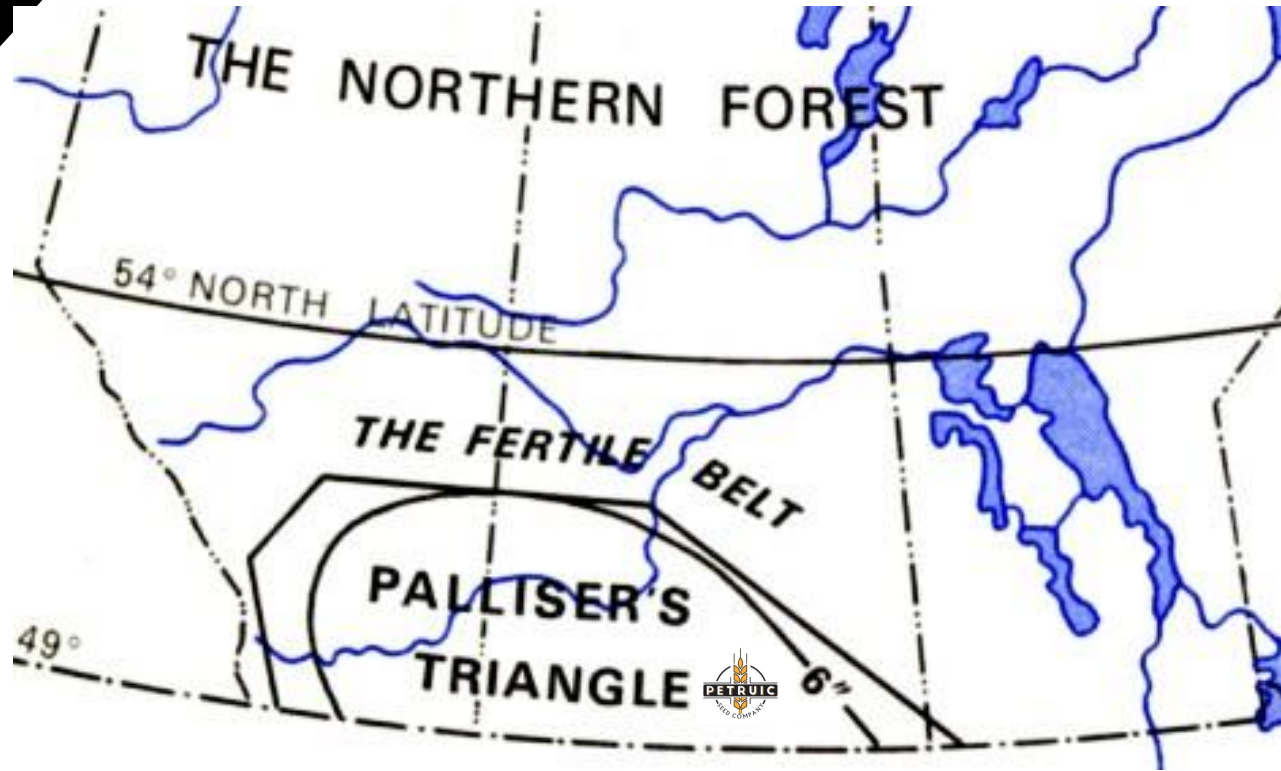




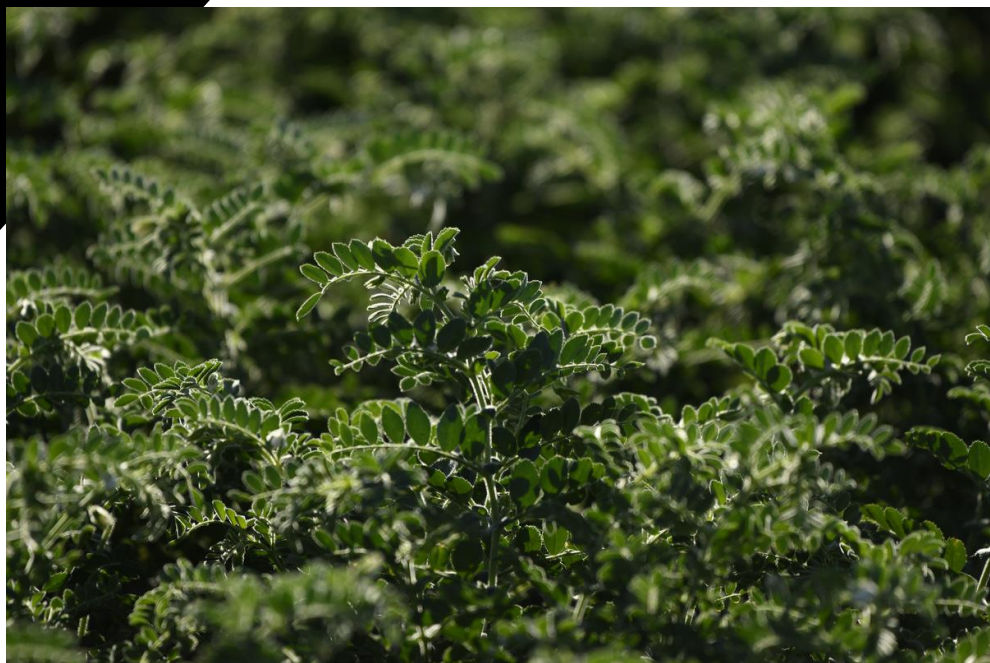
# A Saskatchewan Seed Story

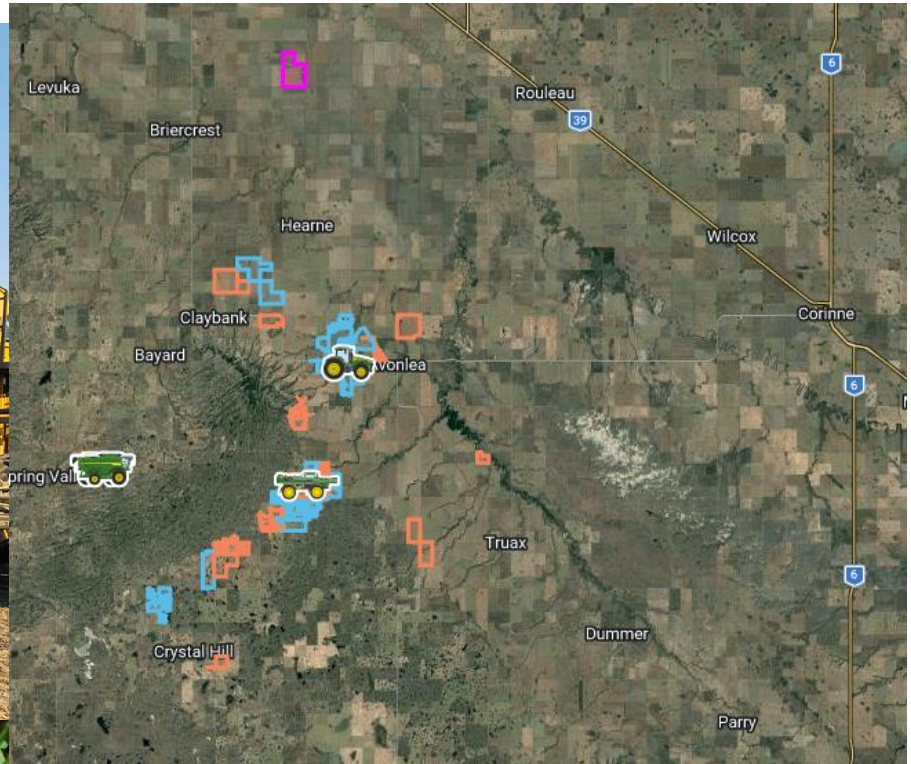
Nick Petruic



John Palliser said my seed farm is located in a **“useless desert”**







5<sup>th</sup> Generation Family Farm  
3<sup>rd</sup> Generation Seed Grower  
Pedigreed Seed, Commercial grain, Forages,  
Cattle and Export of pulses

How many people work with us.... about half!



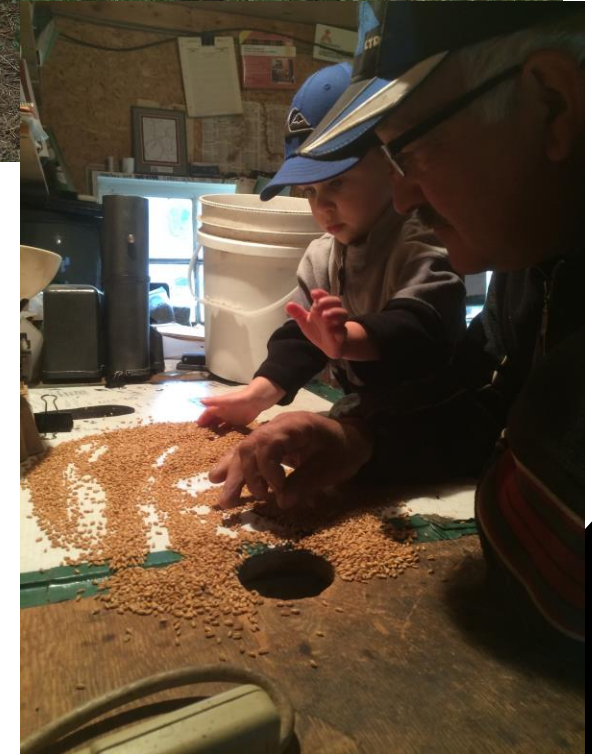
# Current Home of PSC





# Seeds Grown

- Dryland seeds for high quality
- Durum, lentils (red, small green, large green and Indian head type), chickpeas, canary seed, winter wheat
- Wholesale barley, oats, fall rye, CWRS, flax, annual cover crops, perennial forages
- 15 varieties grown for seed annually
  - Select, Foundation, Registered & Certified



# My customers mentality

Winter crops are risky and early spring cereals can compete

What seed will perform on my farm

I need quality because yield isn't always there

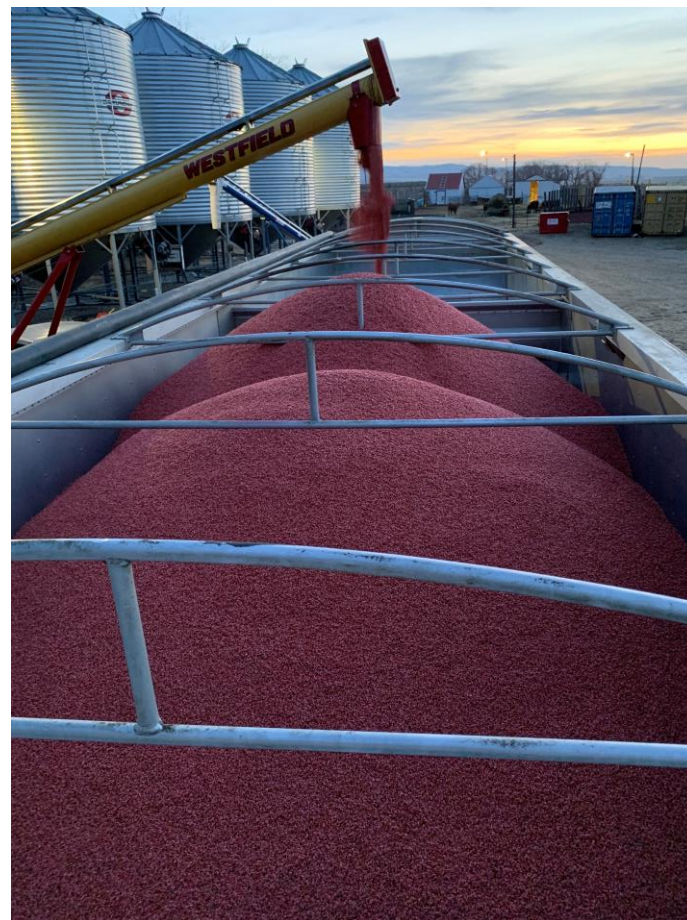


Will it rain in July

Pulses saved the farm

Retained seed has no cost to me (false)

# Service for Seed Protection



# Certified seed use in South Sask

- Purchasing seed yearly isn't a consistent practice in the brown soil zone
  - Canola is the exception
  - Hard times created survival habits
- Certified seed usage for durum 6-12%
  - Durum sales are consistent in my business (5 Million ac in SK)
- Pulse sales change between classes based on markets
  - Varietal campaigns are helping move the newer varieties
- Seed quality is usually sufficient

# Response to this Challenge



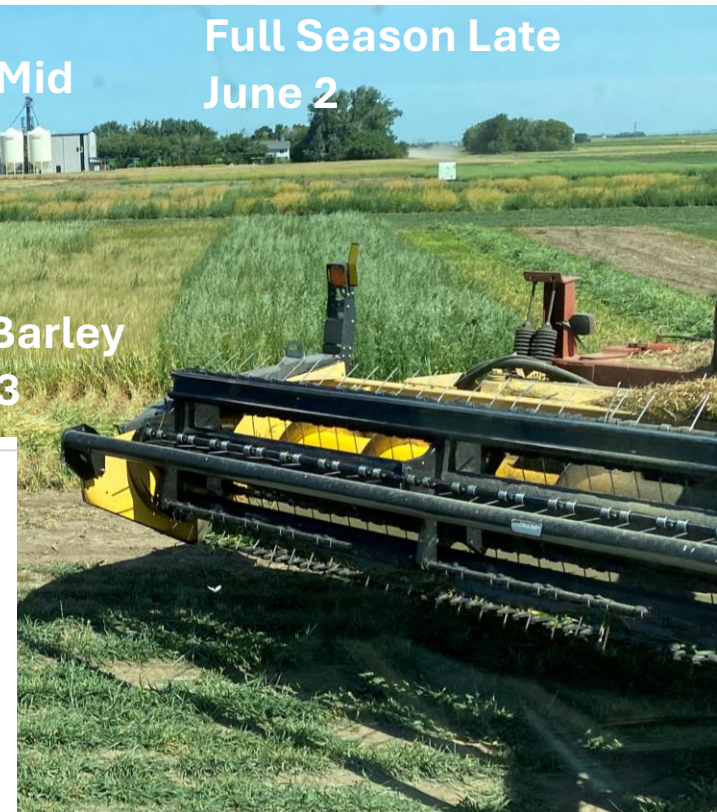



Full Season Early  
May 16

Full Season Mid  
May 23

Full Season Late  
June 2

Feed Barley  
May 23





102 Missouri Coteau  
Avonlea, SK  
S0H 0C0  
[info.ptresearch@gmail.com](mailto:info.ptresearch@gmail.com)  
306.513.8581 | 306.868.7687

---

**1. General Overview**

Protocol ID: 22-PSC-DST  
 Crop: Cereals: durum, barley & canary seed  
 Trial Type: Varietal Performance/demonstration for crop tour  
 Location: Avonlea, SK (Field ID: Maier's Trees)

---

**2. Methodology**

Seeding  
 A custom R-Tech plot seeder was used to seed these trials. This seeder is equipped with 6 Pillar Laser openers on 30 cm spacing. These openers are a hybrid between a hoe-point and disk type opener. The disk cuts a shelf for the fertilizer to be placed below and away from the seed. The hoe-point cuts the seed furrow. Downward spring pressure on rubber packing wheels is used to pack the seed and fertilizer furrows. A 4-row, ground-driven cone distributor is used to place products in the seed row. The drill also has 2 fertilizer boxes which are ground driven to place product either in the seed row or in a side band away from the seed.

All the seed for each variety was weighed out and placed in individual envelopes prior to seeding based on the target seeding rate and TKW for the respective variety. All seed was treated prior to seeding. A summary to seeding dates and agronomic information for each trial can be found in Table 1.

---

**Table 1. Summary of seeding information for Petruc Seed Company trials. Avonlea, SK, 2022**

Trial ID	Plot size <sup>A</sup>	Seeding Date	Crop Type	Seeding rate (lb/ac)	Phos <sup>B</sup> (lb/ac)	Urea <sup>C</sup> (lb/ac)	Seeding Depth
22-PSC-DST	1.2 x 6	May-25	Durum	120 lb/ac	40	158	1.5"
	1.2 x 6		Barley	130 lb/ac	40	158	
	1.2 x 6		Canaryseed	30 lb/ac	40	158	

---

<sup>A</sup> meters; length x width  
<sup>B</sup> 11-52-0; lb/ac  
<sup>C</sup> 46-0-0; lb/ac

---

**Maintenance**  
 Maintenance sprays were done using a 3-point hitch tractor mounted sprayer, equipped with John Deere PSLDXQ2002 nozzles spaced 50 cm apart. This sprayer was calibrated to apply products at a rate of 10 US gal/ac (100 L/ha) when operated at 40 psi.

Due to high feeding pressure from grasshoppers early in the season, Coragen<sup>®</sup> (Chlorantraniliprole, 200 g/L) was sprayed several times this growing season. A summary of all maintenance sprays for each trial can be found below.

# On site Research continued..



# 9 years Later



- 80+ ac/ year
- Over 8000 plots
- SVPG Performance Data
- Partnerships
- Synergy with Seed Farm
- Pre-Breeder plots

# Collaboration is my Competitive Advantage



A “useless” desert.....

Thank You

306-868-2240

[petruicseedco.sales@gmail.com](mailto:petruicseedco.sales@gmail.com)